

# JARVISFIELD HOUSE

Antill Park Country Club

Wedding Journal  
2016



+612 4677 1512

[www.jarvisfieldhouse.com.au](http://www.jarvisfieldhouse.com.au)

# JARVISFIELD HOUSE

Antill Park Country Club

Welcome to the beautiful Jarvisfield House, and thank you for thinking of us as you consider the perfect location for your wedding celebrations.

Jarvisfield House is set in the grounds of the Antill Park Country Club, and the Georgian era building has sweeping views over the surrounding landscape in the historic township of Picton.

Our Wedding Journal has been designed to bring to you key information about Jarvisfield House, as a reference point in the creation of such a momentous occasion.

Our venues are able to be booked, up to twelve months in advance, and the following pages will clearly outline our offerings and expertise in all the possibilities for your wedding.

We would be happy to meet you on site for an appointment to discuss your celebrations in further detail and we look forward to hearing from you soon.

Regards,

# ØLSEN PALMER



ØLSEN PALMER

# JARVISFIELD HOUSE

Antill Park Country Club

Jarvisfield House is a beautiful, historic homestead with a variety of spaces for you to consider.

## Colden Room

The Colden Room is the original dining and lounge room, and exudes sophisticated warmth. Featuring original fireplaces, high ceilings and multiple doors opening onto the front verandah. The Colden Room can seat up to 64 guests. Should your thoughts lean more toward a cocktail style reception, the Colden Room can host up to 150 guests.

Formal arrival can be by way of the original main entry, and guests can also enjoy cocktails and canapes on the front verandah, with views over the pristine golf course.

## West Wing

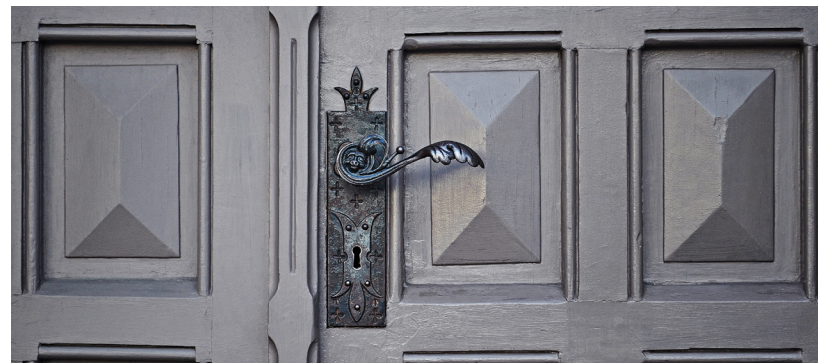
Adjoining The Colden Room, the West Wing can serve as a lounge, break out space or provide additional seating for up to 26 guests. Alternately, grazing stations can be set in the West Wing as part of your hospitality. The West Wing has its own entrance from the Macquarie Courtyard. It can be booked as an individual space for smaller groups or as part of your overall booking with the Colden Room.

## President's Bar

Antill Park Country Club has been operating since 1964 years as a premium golf course, and the Club President's hold pride of place in the club's history. The President's Bar services the Colden Room and West Wing and is a warm and welcoming space for guests to enjoy.

## Macquarie Courtyard

Create an unforgettable arrival experience via the expansive Macquarie Courtyard. Perfect for a beautifully dressed marquee or to be strung with festoon lighting, the courtyard can later transform into your dancefloor under the stars. This unique courtyard can serve as an extensive outdoor space for your guests should you wish to exclusively book Jarvisfield house.





# JARVISFIELD HOUSE

Antill Park Country Club

## The Stonequarry Room

An elegant and exclusive dining space, the Stonequarry Room for private dining is suitable for up to 14 guests. Menu tastings can be hosted in this space as part of your preparations, should your numbers require. We envisage the Stonequarry Room will be available from mid 2016.

## Stonequarry & Victoria Lounges

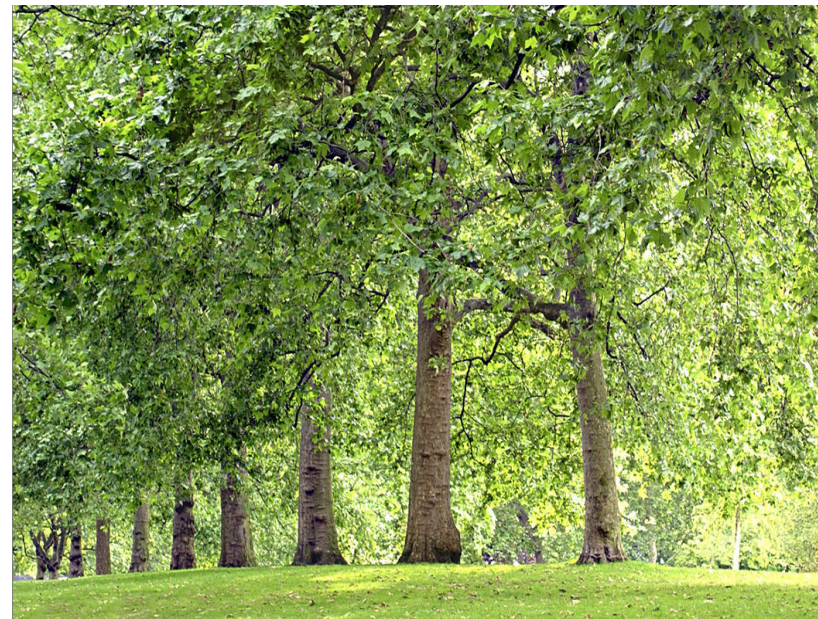
The upper floor of Jarvisfield House features two private lounges, alongside the Stonequarry Room. These will also be available from mid 2016 as part of exclusive venue bookings. The Stonequarry Lounge can also be booked in conjunction with the Stonequarry Room.

## Outdoor Spaces

The latter part of 2016 will see outdoor locations launched at Antill Park, with a marquee by the green and opportunities to host your wedding celebrations beneath the 180-year-old trees across the property. Capacities and parameters of these spaces will be available October 2016.

## Your Ceremony

Consider holding your ceremony on the 9th green, which is directly in front of Jarvisfield House. Incredibly picturesque and unforgettable. We can also arrange chauffeured golf buggies for bridal party photographs on the course as play permits.



# JARVISFIELD HOUSE

Antill Park Country Club

## Your menu

The menus at Jarvisfield House are created seasonally by our Chefs. Ingredients are sourced locally wherever possible, and always from the very best purveyors.

We are able to create menus for cocktail style receptions along with seated events. We design on a philosophy of food culture as social connection, and embrace this with the creation of shared platters, grazing stations and tasting menus, along with the more traditional alternate serve menu. We do ask to be informed as early as possible of specific dietary requirements, to design your menus accordingly. Whilst we understand and appreciate that guest numbers can change in the months leading to your wedding, we do require final guest numbers four weeks prior to your celebrations.

## Your beverages

Our wine lists are a real source of pride and we offer you a tailored sommelier designed selection to suit your tastes. We feel that a tailored package is best suited to weddings, but we are happy to discuss beverages on consumption if you choose. Tasting menus can include matched wine options for a truly memorable taste experience.

For those guests who are beer connoisseurs, we offer a selection of craft beers to add another layer of detail, and can design your menu to suit these selections as well.

We are a fully licensed venue, including on-grounds. We are happy to facilitate the provision of specific requests and require a minimum two months to ensure availability.





# JARVISFIELD HOUSE

Antill Park Country Club

## Styling

Olsen Palmer are the exclusive stylists to Jarvisfield House. Dedicated to weaving a rich tapestry of visual and sensory experience. Simple elegance to the most extravagant of occasions, our creative and floral designers will take care of your every styling detail. We work our magic to create beautiful memories, whatever your vision. A personalised styling quotation will be provided after a one hour consultation with our designers, with design and styling of classic inclusions starting from \$5800.

## Photography

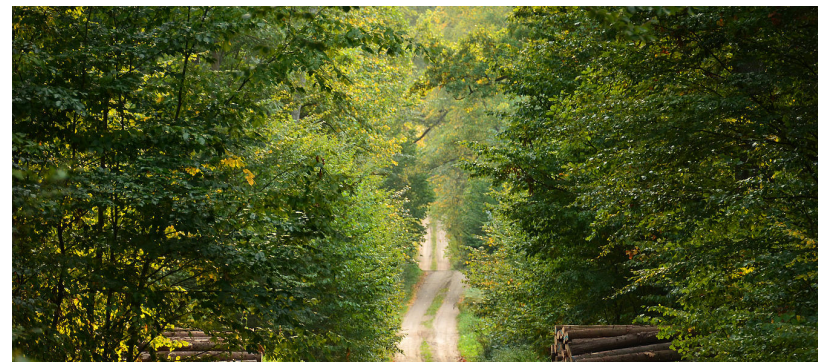
Olsen Palmer has a preferred supplier list of well respected wedding photographers. They will meet with you to discuss your overall vision in terms of capturing your wedding day. Our team will guide you on the best locations, lighting conditions and possibilities around the property. A range of services are available and indicative pricing is available on request.

## Full Wedding Management

Olsen Palmer can take care of your full wedding design, planning and management should you require. Please let us know if you would like us to provide comprehensive wedding planning and management of each and every detail.

## Recommendations

We have strong local and industry connections, and are able to provide recommendations for invitation design, celebrants, hair and makeup consultants, massage and relaxation therapists, entertainment, transport and accommodation. We are happy to assist, please just ask to see how we can help.



# JARVISFIELD HOUSE

Antill Park Country Club

## Your wedding venue and taste compilation:

For wedding receptions, over five hours, for you to enjoy moment after moment.

Arrival canapes and beverages on the verandah  
Two or three course menu from seasonal selections  
Cheese and seasonal fruits  
Beverages including sparkling, wine, beer, soft drink and juices

The offerings will be based on your guest numbers and the experience you would like to create.

We offer our menu compilations at three levels.

Classic Menu	<b>\$ 100/pp</b>
Luxury Menu	<b>\$ 120/pp</b>
Abundance Menu	<b>\$ 160/pp</b>

Your beverage selection can also be selected from three levels.

Classic Beverages	<b>\$ 70/pp</b>
Luxury Beverages	<b>\$ 90/pp</b>
Abundance Beverages	<b>\$ 120/pp</b>

Your menu tasting is complimentary for two, with additional tasting guests at \$95.

For cocktail wedding receptions, we would base your special event package on a three to five hour timeframe.

Select from cold, hot, vegetarian and dessert canapes.

Three hours with selection of 7 canapes	<b>\$ 50/pp</b>
Four hours with selection of 8 canapes	<b>\$ 70/pp</b>
Five hours with selection of 8 canapes and a cheese and charcuterie grazing station	<b>\$ 90/pp</b>





# JARVISFIELD HOUSE

Antill Park Country Club

## Compilations

Food & Beverage Offerings

### Classic

<b>Food Selection</b>	<b>\$100/pp</b>	<b>Beverage Selection</b>	<b>\$70/pp</b>
Canape service for first hour Dinner - Two Course Menu		Sparkling Wine Jarvisfield House Wine: 1 white & 1 red Selected Beers: local Fruit Juice & Soft Drink Campos Coffee T2 Tea	

### Luxury

<b>Food Selection</b>	<b>\$120/pp</b>	<b>Beverage Selection</b>	<b>\$90/pp</b>
Canape service for first hour Dinner - Three Course Menu		Sparkling Wine Cellar Door Wines: 2 white & 2 red Selected Beers: local & imported Fruit Juice & Soft Drink Campos Coffee T2 Tea	

### Abundance

<b>Food Selection</b>	<b>\$160/pp</b>	<b>Beverage Selection</b>	<b>\$120/pp</b>
Canape service for first hour Dinner - Three Course Menu Sorbet between Entree & Main Course Cheese & Seasonal Fruits		Champagne Sommellier Wines: 3 white & 3 red Selected Premium Beers: local, imported & craft 5 Spirits Fruit Juice & Soft Drink Campos Coffee T2 Tea	

Additional requests can be provided





# JARVISFIELD HOUSE

Antill Park Country Club

## Canape Menu

Select from cold, hot, vegetarian and dessert canapes

### cold

selection australian & french cheese  
charcuterie, house pickles  
heirloom gazpacho, baby celery  
maple baked ham, house mustard baguette  
narooma oysters: natural, champagne cucumber,  
spiced lime, pork belly soy  
prawns: classic cocktail, individual lettuce cup  
beetroot cured salmon: on rye, pepper crème  
dill salt cured salmon: on rye, citron crème  
smoked trout rilette, house pickle  
crab toast: lime, aioli, brioche  
steak tartare: potato crisp  
rare beef fillet: fresh horseradish, parmesan crème

### vegetarian

selection australian & french cheese  
zucchini goats curd tart.  
croquettes: manchego  
heirloom gazpacho, baby celery  
mushroom spring roll, onion crème.  
chilled corn veloute

### hot

croquettes: salt cod, ham hock, manchego  
beef cheek slider: pickled beet, horseradish aioli  
fried chicken: smoked aioli  
zucchini goats curd tart  
duck pancake, quince jam, spring onion  
roast carrot, chorizo sausage roll  
grilled prawn, espelette pepper  
truffle french fries cup  
hay baked ham, celeriac roulade.  
slow roast pig, apple cabbage  
spiced lamb ribs

### dessert

mixed gelato cones  
vanilla bean cream caramel  
bitter chocolate tart  
lemon citron tart  
seasonal berry mess  
\*\*option to serve your wedding cake as a  
dessert.  
Cakeage applies at \$5pp.



The above is an indication of seasonal menu inclusions. All dishes are subject to market availability and may be subject to change. We will advise you of any variations as soon as is practicable.

# JARVISFIELD HOUSE

Antill Park Country Club

## Seated Menu

Two selections can be made for each course

### amuse bouche

chicken parfait, brioche  
fish paprika soup  
corn veloute  
heirloom gazpacho, baby celery

### mains

half roasted chicken soft polenta and chicken jus  
leg of duck confit, peas, shallot, lardons  
slow cooked lamb shoulder, turnip, brussel sprouts  
braised wagyu brisket, paris mash, cabernet sauce  
market salmon, smoked eggplant puree, broccolinio

### entree

cured venison, horse radish, creme frieche  
crab bisque, wild fennel  
pumpkin raviolo, sage beurre noisette  
confit chicken, walnut, pear  
assiette duck, rilette, beignets, cured

### dessert

vanilla bean creme brulee  
chocolate delice, hazelnut, toffee creme  
coffee mousse, cinnamon donut  
PX raisin tart, clotted cream ice cream  
\*\*option to serve your wedding cake as a dessert.  
Cakeage applies at \$5pp.



The above is an indication of seasonal menu inclusions. All dishes are subject to market availability and may be subject to change. We will advise you of any variations as soon as is practicable.

ØLSEN PALMER



# JARVISFIELD HOUSE

Antill Park Country Club

## Your Wine and Beer Selections

Our beverage packages are not static collections of wines and beers, but rather a reflection of the best we can offer across the year. As such, the selections below are an indication of our offerings, and these will change with the months and as we discover new selections to compliment your celebrations.

### Jarvisfield House Cellar Door

#### sparkling

Jarvisfield House chardonnay pinot orange

#### white

Jarvisfield House sem sav blanc margaret river  
First Creek moscato hunter valley

#### red

Jarvisfield House cab sav south australia

### Cellar Door

#### sparkling

Jarvisfield House chardonnay pinot orange

#### white

Jarvisfield House sem sav blanc margaret river  
First Creek moscato hunter valley  
Spinning Top sauvignon blanc marlborough  
First Creek semillion hunter valley  
Home Estate pinot gris yarra valley  
Scarborough chardonnay hunter valley

#### red

Jarvisfield House cab sav south australia  
Fox Trot cabernet merlot margaret river  
Ant Moore pinot noir marlborough  
Weemala merlot mudgee  
Shield Estate shiraz barossa  
Hope Estate 'cracker' cab shiraz hunter valley  
First Creek tempranillo hunter valley

### Sommeliers

#### sparkling

Jarvisfield House pinot chardonnay orange  
monmousseau vouvray france

#### white

Jarvisfield House sem sav blanc margaret river  
First Creek moscato hunter valley  
Spinning Top sauvignon blanc marlborough  
First Creek semillion hunter valley  
Home Estate pinot gris yarra valley  
Scarborough chardonnay hunter valley  
Fox Trot sem sav blanc margaret river  
Ant Moore sauvignon blanc marlborough  
Tertini riesling bowral

#### red

Jarvisfield House cab sav south australia  
Fox Trot cabernet merlot margaret river  
Ant Moore pinot noir marlborough  
Weemala merlot mudgee  
Shield Estate shiraz barossa  
Hope Estate 'cracker' cab shiraz hunter valley  
First Creek tempranillo hunter valley  
Ballant shiraz south australia  
Mont Redon grenach shiraz mouv france

# JARVISFIELD HOUSE

Antill Park Country Club

## That Little Something Extra

There are any number of additional inclusions you may like to consider as part of your wedding design.

Consider:

Welcome cocktail	Select a classic cocktail, an aperitif or allow us to create a bespoke taste for your day.	from: \$16 /pp
Candy bar	In your event palette or a mix of your absolute favourites.	\$650
Whisky bar	For those who may like to sit and sip after dessert.	on consumption
More Food Later Please!*	Additional substantial menu item for later in the night.	\$20 /pp
Personal sommelier	A dedicated sommelier for the duration of your celebrations.	price on request
Bonbonniere	Chocolate truffles, Campos coffee ... whatever you wish!	\$8 /pp

\* The "More Food Later Please" addition is automatically included with an extended hire of your booking.

Prior to your wedding, you may like to book a golf afternoon with friends, family or your bridal party, including a Pro Golfer professional for your round. Please let us know if you would like us to facilitate this with the Pro Golf Team.



# JARVISFIELD HOUSE

Antill Park Country Club

## Availabilities

Jarvisfield House operates a french-style brasserie in the Colden Room and West Wing across five days of the week. For an informal pre-wedding dining experience, you may like to book a table in this space.

For exclusive venue hire, we are able to facilitate bookings based on venue availability and around major golfing events. We can recommend the most suitable spaces and also discuss the various options on grounds or another of our properties, if appropriate.

Your wedding booking is across a standard 5 hour window for seated and special events. This provides for your event from guest arrival, plus an additional one hour prior to and following your event, for any install and dismantle teams. Additional costs apply to extended bookings.

Our license extends to 12 midnight across all days of the week.

## Parking

On site parking is available for guests. The bridal cars may use the circular drive to set down the wedding party at the front of Jarvisfield House.



# JARVISFIELD HOUSE

Antill Park Country Club

## Terms & Conditions

### Formal acceptance of quotation

To accept your quotation, please return a signed copy of your quotation. To secure your booking, a non-refundable deposit of 10% is payable within 7 days. Your invoice will include a payment schedule for reference.

Six months prior to your wedding, an additional 75% of the balance is payable. Twenty-eight [28] days from your wedding, your final payment is due, along with provision of final guest numbers.

Payment can be made by direct deposit or credit card. A merchant fee is applied to payment by Visa, Mastercard and Amex.

### Additions

All additional services or inclusions will be seen as addendums to the contracted booking and subject to the same terms and conditions here within.

### Cancellation

Cancellation of your booking must be provided in writing. Cancellations between six months and three months from booking date will incur costs equal to 50% of the total contracted amount, including any variations. Cancellations within three months of the booking date are subject to full payment of the contracted amount, including variations.

### Variation

All requests for variations must be provided in writing. Reduction in guest numbers of up to 10% will be accommodated in your booking. This is at the contracted amount per person, if notified, up to twenty-eight [28] days from your booking. Reductions of greater than 10% of guest numbers will require a re-costing.





# JARVISFIELD HOUSE

Antill Park Country Club

## Terms & Conditions

### Extension of booking

Your wedding booking can be extended from your original timing, at a cost of \$800 /hr. Beverages will then be costed on a consumption basis.

### Damages

Responsibility of repair or replacement of any items including but not limited to property, furnishings and grounds, will remain the responsibility of the client/s. General cleaning of premises is included within venue bookings however additional fees will apply should specialised cleaning services be required post-event.

### On-grounds event conditions

All events held on the grounds of the course, including those areas adjacent to all greens, will attract an on-grounds fee and guidelines for acceptable use. Substantial fees apply for any and all breaches of on-grounds use. All on-grounds events will include an additional supervisor.

### Entertainment

Olsen Palmer reserves the right to veto any entertainment proposals or events that are deemed inappropriate or not in keeping with the venue and its use, at any time leading up to and during any events. Clients agree to inform Olsen Palmer of any and all entertainment proposed.



## A unique place in history

Captain Henry Colden Antill [1779-1852] sailed to Australia with the 73rd Regiment in 1809. The village known today as Picton was originally called 'Jarvisfield', so named by Captain Antill when he was first granted land in the area in 1822 by Governor Brisbane.

A firm friend of Captain Lachlan Macquarie, Jarvisfield was so named in honour of Captain Macquarie's first wife, Jane Jarvis & also taken from a property owned by Captain Macquarie on the Isle of Mull, in Scotland.

Upon receipt of this land grant, the Captain built a small cottage. Later his eldest son John Macquarie Antill built a larger home. This home still stands today and is a heritage listed property, standing proudly as Jarvisfield House on the grounds of Antill Park Country Club.

